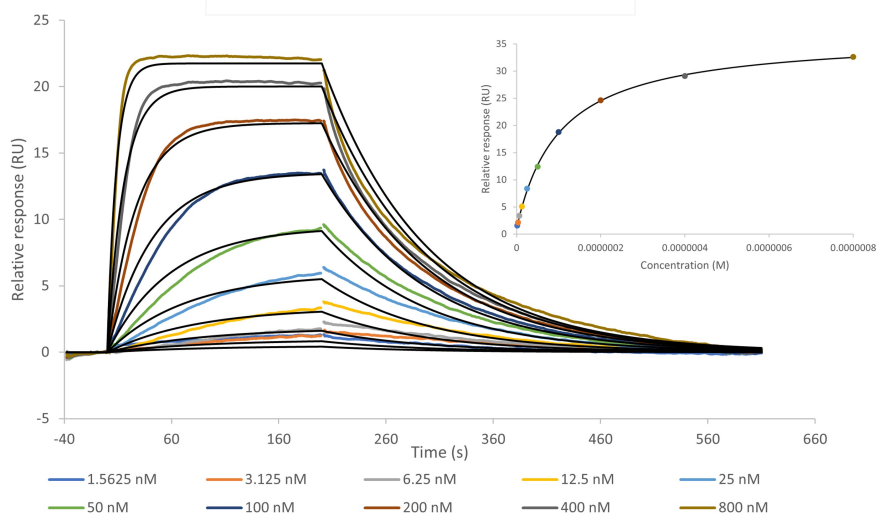


# Cyclophilin A SPR Assay Service

Cyclophilin A for direct binding screening and profiling of test substance with [surface plasmon resonance \(SPR\)](#) technique.

Target Overview	
Target	Cyclophilin A
HGNC Symbol	PPIA
Synonyms	Peptidylprolyl isomerase A
Scientific Information	<a href="https://www.uniprot.org/uniprotkb/P62937">P62937</a> ( <a href="https://www.uniprot.org/uniprotkb/P62937">https://www.uniprot.org/uniprotkb/P62937</a> )
Protein Source	<a href="https://www.sinobiological.com/recombinant-proteins/human-cyclophilin-a-10436-h08e">https://www.sinobiological.com/recombinant-proteins/human-cyclophilin-a-10436-h08e</a>
Screening Location	Malvern, PA, USA
Further Information	More information can be found on our website <a href="#">SPR Assay Services for Drug Discovery</a> .

## Cyclosporin A binding to Cyclophilin A



Binding Model	Target	Analyte	Chi <sup>2</sup> (RU <sup>2</sup> )	k <sub>a</sub> (1/Ms)	k <sub>d</sub> (1/s)	K <sub>D</sub> (M)	R <sub>max</sub> (RU)	Offset (RU)
1:1 Kinetic	Cyclophilin A	Cyclosporin A	2.77e-1	1.35e+5	1.03e-2	7.61e-8	23.8	
Steady state affinity	Cyclophilin A	Cyclosporin A	5.43e-2			8.52e-8	24.1	0.4

The data were collected on a Biacore 8K using multi-cycle kinetics. The data were analyzed using a 1:1 kinetic binding model and a steady state affinity model.

Let's Discover Together.

© Mar 2024. Reaction Biology. All rights reserved.