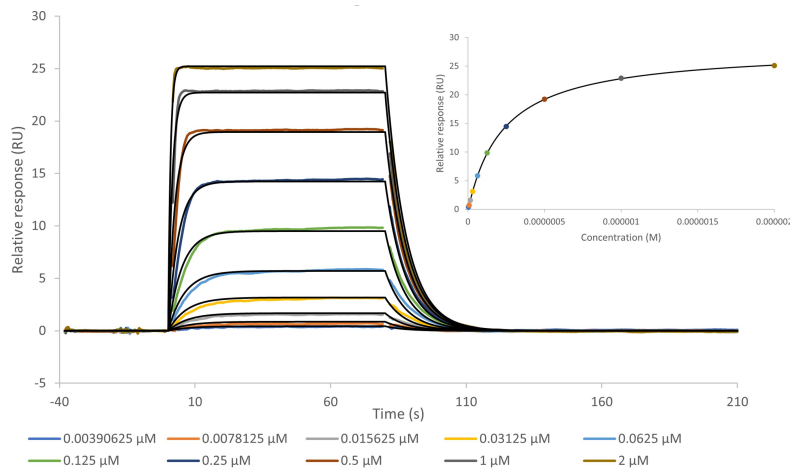


VHL SPR Assay Service

VHL/EloB/EloC for direct binding screening and profiling of test substance with [surface plasmon resonance \(SPR\)](#) technique.

Target Overview	
Target	VHL/EloB/EloC
HGNC Symbol	VHL ELOB ELOC
Synonyms	von Hippel-Lindau tumor suppressor Elongin B Elongin C
Scientific Information	P40337 (https://www.uniprot.org/uniprotkb/P40337) Q15370 (https://www.uniprot.org/uniprotkb/Q15370) Q15369 (https://www.uniprot.org/uniprotkb/Q15369)
Protein Source	Produced at Reaction Biology
Screening Location	Malvern, PA, USA
Further Information	More information can be found on our website SPR Assay Services for Drug Discovery .

VH298 binding to VHL



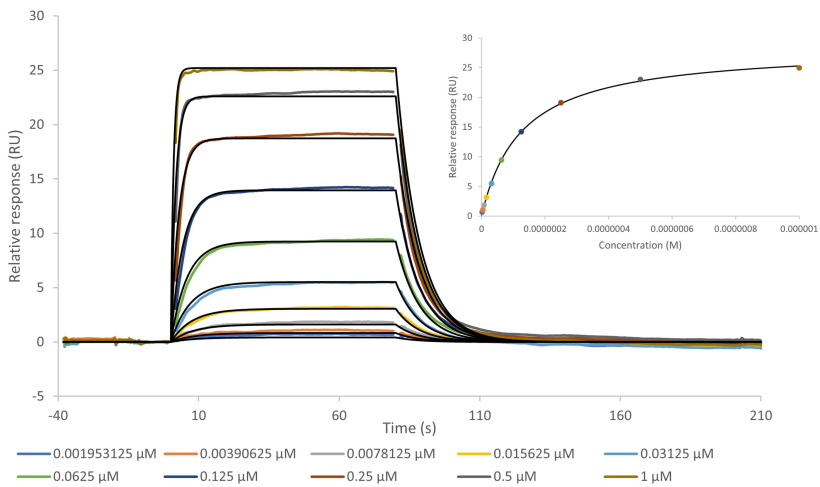
Binding Model	Target	Analyte	Chi ² (RU ²)	k _a (1/Ms)	k _d (1/s)	K _D (M)	R _{max} (RU)	Offset (RU)
1:1 Kinetic	VHL/EloB/EloC	VH298	5.12e-2	5.34e5	1.32e-1	2.48e-7	28.4	
Steady state affinity	VHL/EloB/EloC	VH298	6.49e-3			2.29e-7	28.3	-0.2

The data were collected on a Biacore 8K using multi-cycle kinetics. The data were analyzed using a 1:1 kinetic binding model and a steady state affinity model.

Let's Discover Together.

© Mar 2024. Reaction Biology. All rights reserved.

MZ1 binding to VHL



Binding Model	Target	Analyte	Chi ² (RU ²)	k _a (1/Ms)	k _d (1/s)	K _D (M)	R _{max} (RU)	Offset (RU)
1:1 Kinetic	VHL/EloB/EloC	MZ1	7.45e-2	9.20e5	1.20e-1	1.30e-7	28.5	
Steady state affinity	VHL/EloB/EloC	MZ1	4.07e-2			1.27e-7	28.3	0.1

The data were collected on a Biacore 8K using multi-cycle kinetics. The data were analyzed using a 1:1 kinetic binding model and a steady state affinity model.