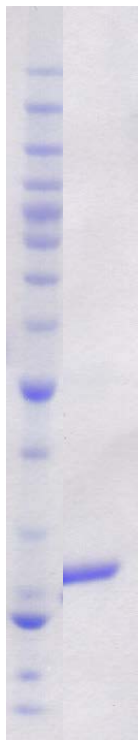


ITPA (His)

(Inosine triphosphate pyrophosphatase)

CATALOG NO.: NUC-11-306**LOT NO.:** 1780**DESCRIPTION:** Human recombinant inosine triphosphatase (ITPA) (residues 2-194; Genbank Accession # NM_033453.3; MW = 24.4 kDa) expressed as an N-terminal His-fusion protein in *E. coli*.**PURITY:** >90% by SDS-PAGE**SUPPLIED AS:** 2.49 µg/µL in 50 mM Tris HCl, pH 7.5, 500 mM NaCl, 1 mM TCEP, 10 % glycerol**STORAGE:** -70°C. Thaw quickly and store on ice before use. The remaining, unused, undiluted protein should be snap frozen, for example in a dry/ice ethanol bath or liquid nitrogen. Minimize freeze/thaws if possible, but very low volume aliquots (<5 µl) or storage of diluted enzyme is not recommended.

Coomassie blue-stained SDS-PAGE (12% acrylamide) of 4.5 µg of RBC ITPA (His). MW markers (left) are, from top, 220, 160, 120, 100, 90, 80, 70, 60, **50**, 40, 30, 25, **20**, 15, 10 kDa.

This product is not intended for therapeutic or diagnostic use in animals or in humans.

Reaction Biology

1 Great Valley Parkway, Malvern PA, USA 19355

requests@reactionbiology.com www.reactionbiology.com