

MTH1 (His)

CATALOG NO.: NUC-11-307

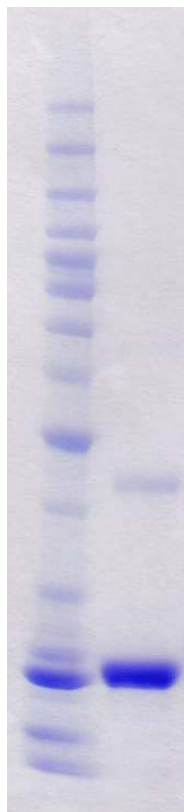
LOT NO.:

DESCRIPTION: Human recombinant 8-oxo-dGTPase (residues 2-156 ; Genbank Accession D38594.2; MW = 20.8 kDa) expressed as an N-terminal His-fusion protein in *E. coli*.

PURITY: >80% by SDS-PAGE

SUPPLIED AS: $\mu\text{g}/\mu\text{L}$ in 50 mM Tris HCl, pH 7.5, 500 mM NaCl, 1 mM TCEP, 10 % glycerol

STORAGE: -70°C. Thaw quickly and store on ice before use. The remaining, unused, undiluted protein should be snap frozen, for example in a dry/ice ethanol bath or liquid nitrogen. Minimize freeze/thaws if possible, but very low volume aliquots (<5 μl) or storage of diluted enzyme is not recommended.



Coomassie blue-stained SDS-PAGE (12% acrylamide) of 5 μg of RBC MTH1 (His). MW markers (left) are, from top, 220, 160, 120, 100, 90, 80, 70, 60, **50**, 40, 30, 25, **20**, 15, 10 kDa.

This product is not intended for therapeutic or diagnostic use in animals or in humans.

Reaction Biology

1 Great Valley Parkway, Malvern PA, USA 19355

requests@reactionbiology.com www.reactionbiology.com