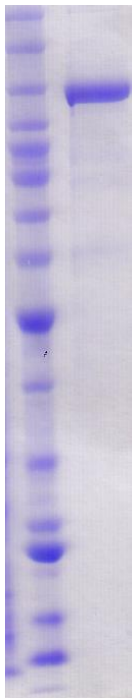


PARP1 (His)

Poly (ADP-ribose) Polymerase 1 (PARP1) (His)

CATALOG NO.: PAR-21-346**LOT NO.:****DESCRIPTION:** Human recombinant PARP1 (residues 1-1014; Genbank Accession # NM_001618.3; MW = 114.8 kDa) expressed with a C-terminal His-tag in *Sf9* insect cells.**PURITY:** >80% by SDS-PAGE**SUPPLIED AS:** $_ \mu\text{g}/\mu\text{L}$ in 50 mM Tris HCl, pH 7.5, 500 mM NaCl, 1 mM TCEP, 10% glycerol**STORAGE:** -70°C. Thaw quickly and store on ice before use. The remaining, unused, undiluted protein should be snap frozen, for example in a dry ice ethanol bath or liquid nitrogen. Minimize freeze/thaws if possible, but very low volume aliquots (<5 μl) or storage of diluted enzyme is not recommended.

Coomassie blue-stained SDS-PAGE (12% acrylamide) of 2 μg of RBC PARP1 (His)

MW markers (left) are, from top, 220, 160, 120, 100, 90, 80, 70, 60, **50**, 40, 30, 25, **20**, 15, 10 kDa.

This product is not intended for therapeutic or diagnostic use in animals or in humans.

Reaction Biology

1 Great Valley Parkway, Malvern PA, USA 19355
requests@reactionbiology.com www.reactionbiology.com