

APEX nuclease (multifunctional DNA repair enzyme) 1 (APEX1), transcript variant 1 (GST)

**CATALOG NO.:** DDR-11-331

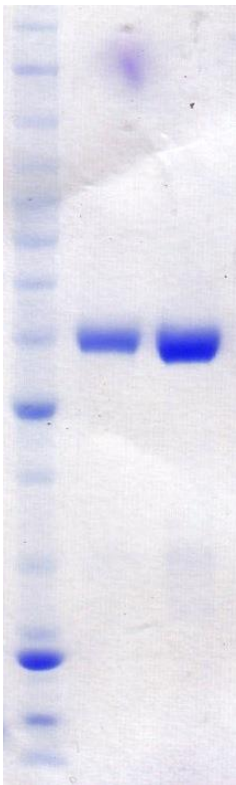
**LOT NO.:**

**DESCRIPTION:** Human recombinant APEX1 (residues 1-318; Genbank Accession #NM\_001641.3; MW = 62.5 kDa) expressed as an N-terminal GST-fusion protein in *E. coli*.

**PURITY:** >90% by SDS-PAGE

**SUPPLIED AS:**  $\_ \mu\text{g}/\mu\text{L}$  in 50 mM Tris HCl, pH 8.0, 300 mM NaCl, 1 mM EDTA, 1 mM TCEP, 20% glycerol (w/v)

**STORAGE:** -70°C. Thaw quickly and store on ice before use. The remaining, unused, undiluted protein should be snap frozen, for example in a dry ice ethanol bath or liquid nitrogen. Minimize freeze/thaws if possible, but very low volume aliquots (<5  $\mu\text{l}$ ) or storage of diluted enzyme is not recommended.



**Coomassie blue-stained SDS-PAGE (12% acrylamide) of 2 $\mu\text{g}$  and 4 $\mu\text{g}$  of RBC APEX1 (GST).** MW markers (left) are, from top, 220, 160, 120, 100, 90, 80, 70, 60, **50**, 40, 30, 25, **20**, 15, 10 kDa.

This product is NOT intended for therapeutic or diagnostic use in animals or in humans.