

KDM6B (StrepII) (Lysine-Specific Demethylase 6B)

CATALOG NO.: PDM-11-362

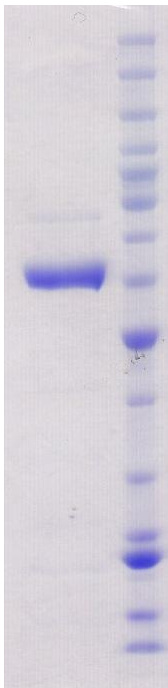
LOT NO.:

DESCRIPTION: Human recombinant KDM6B (residues 1141-1682; Genbank Accession # NM_001080424.1; MW = 62.3 kDa) expressed with a C-terminal StrepII tag in *E. coli*.

PURITY: >70% by SDS-PAGE

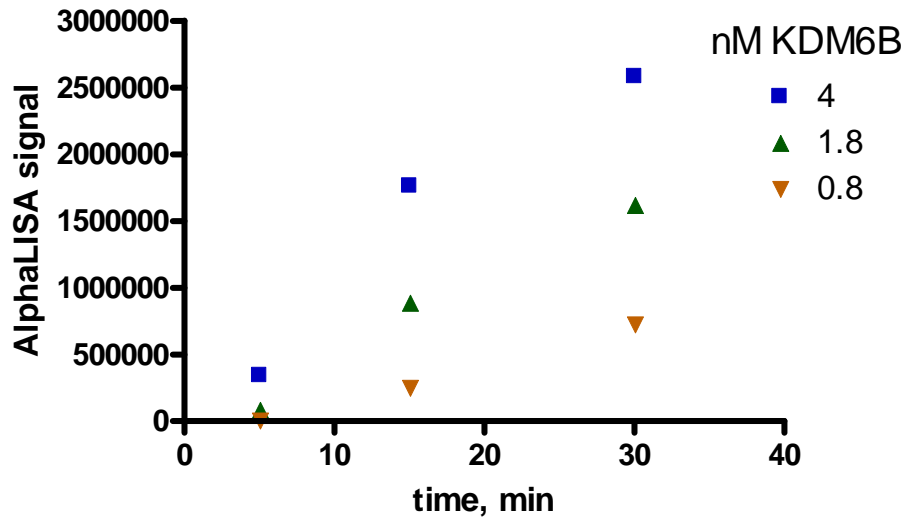
SUPPLIED AS: ___ $\mu\text{g}/\mu\text{L}$ in 20 mM Tris HCl, pH 7.5, 150 mM NaCl, 5% glycerol

STORAGE: -70°C . Thaw quickly and store on ice before use. The remaining, unused, undiluted protein should be snap frozen, for example in a dry ice ethanol bath or liquid nitrogen. Minimize freeze/thaws if possible, but very low volume aliquots (<5 μl) or storage of diluted enzyme is not recommended.



Coomassie blue-stained SDS-PAGE (12% acrylamide) of 4 μg of RBC KDM6B (StrepII). MW markers (left) are, from top, 220, 160, 120, 100, 90, 80, 70, 60, 50, 40, 30, 25, 20, 15, 10 kDa.

Demethylase activity of KDM6B



KDM6B Demethylase Activity Assay. B-H3(21-44)K27Me3 peptide demethylation was monitored using AlphaLISA detection (Perkin Elmer AL121M). The 10 μL reaction contained 20 μM Fe(II), 50 μM α -KG, 100 μM ascorbate and 50 nM peptide and variable concentration of KDM6B. Reactions were quenched at specified time by the addition of EDTA followed by detection reagent. Fluorescence emission (615 nm) was read using Envision reader (Perkin Elmer).

This product is NOT intended for therapeutic or diagnostic use in animals or in humans.