

MLL4 Complex (Mixed Lineage Leukemia Protein-4 in complex with WDR5, RbBP5, Ash2L, (DPY-30)<sub>2</sub>)

CATALOG NO.: HMT-15-108

LOT NO.:

**DESCRIPTION:** Human recombinant MLL4 (residues 2490-2715; Genbank Accession # NM\_014727; MW = 28 kDa) in complex with human recombinants WDR5 (22-334; NM\_017588; 34 kDa), RbBP5 (1-538; NM\_005057; 61 kDa), Ash2L (2-534; NM\_001105214; 63 kDa) and DPY-30 (1-99; NM\_0325742; 13 kDa; two per complex). All proteins were expressed in *E. coli* with N-terminal His-tags. Catalyzes the transfer of methyl groups from S-adenosyl-L-methionine (SAM) to the ε-amino function of protein L-lysine residues, specifically lysine-4 of histone H3 (H3K4). The MLL4 subunit of this preparation comprises the catalytic SET domain<sup>1</sup> as well as the WDR5 interaction motif (*Win*)<sup>2,3</sup> necessary for assembly of the active complex<sup>4-6</sup>. Like MLLs 1, 2 and 3, MLL4 complex methylates histone H3 lysine-4 (H3K4), conferring an activating epigenetic mark<sup>7,8</sup>. Experiments assessing the combined effects of histone deacetylase inhibitors and MLL knockdowns implicate MLL4 as a primary link between increases in global histone H3 acetylation and H3K4 methylation<sup>9</sup>. MLL4 complex (or MLL3 complex) forms a part of the "activating signal cointegrator-2" (ASC-2) Complex or ASCOM<sup>7,10</sup>. ASCOM acts as a coactivator of various nuclear receptors<sup>11-14</sup> and other transcription factors, including the tumor suppressor p53<sup>15</sup>. The chromatin remodeling complex Swi/Snf colocalizes with ASCOM, an interaction mediated by binding of the MLL4 (or MLL3) SET domain to the Swi/Snf subunit INI1<sup>16</sup>. A frequent translocation breakpoint of the MLL4 gene in hepatocellular carcinoma is also a preferred integration site for hepatitis B virus DNA, suggesting a link to liver oncogenesis<sup>17</sup>. Knockdown of MLLs 3 and 4 diminishes estrogen-induced expression of HOXC10, which is overexpressed in breast cancer<sup>18</sup>.

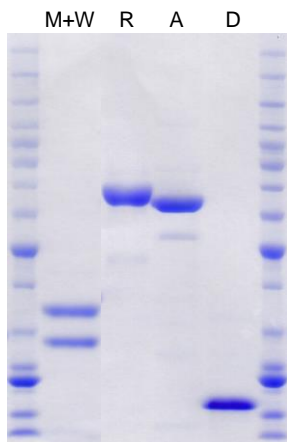
**PURITY:** >90% by SDS-PAGE.

**ASSAY CONDITIONS:** RBC's MLL4 Complex displays histone methyltransferase activity at MLL4 concentrations of 20 nM-1 μM, 15-90 min. reactions, 30°C, in the HMT HotSpot<sup>SM</sup> Assay format, with several H3K4-containing substrates (chicken core histones (0.05 mg/mL), calf-thymus histone H3 (5 μM), H3(1-21) peptide (5 μM)), nucleosomes (0.05 mg/mL as DNA)). Reaction conditions are: 50 mM Tris-HCl, pH 8.5, 50 mM NaCl, 5 mM MgCl<sub>2</sub>, 1 mM DTT, 1 mM PMSF, protein or peptide substrate at concentrations indicated above, [<sup>3</sup>H]-SAM and a suitable dilution of "RBC MLL Enhancer" (provided). NOTE: Optimal MLL Enhancer dilution depends on substrate and assay system and must be determined by the user. This typically ranges from 1/10 to 1/100 dilutions, i.e. 10% to 1% of the final reaction volume. MLL4 Complex also displays activity in the absence of Enhancer, in a filter-binding assay with nucleosomes or histones as substrate (see Figure below; buffer conditions are the same as for HotSpot<sup>SM</sup> assays).

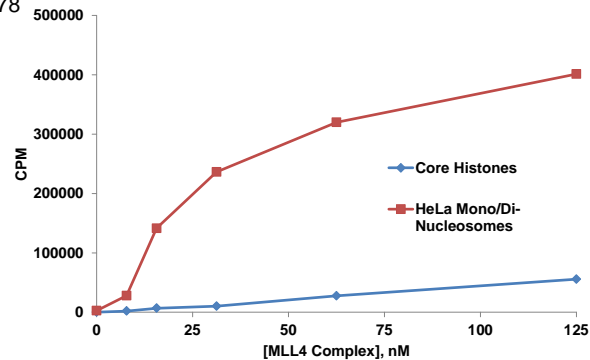
**SUPPLIED AS:** \_\_\_ μM MLL4 Complex, as defined above, (\_\_\_ μg/μl total protein) in 20 mM Tris-HCl, pH 7.5, 300 mM NaCl, 1 mM TCEP (tris(2-carboxyethyl)phosphine HCl), 10% (w/v) glycerol, 1 μM ZnCl<sub>2</sub> as determined by OD<sub>280</sub>.

**STORAGE:** -70°C. Thaw quickly and store on ice before use. The remaining, unused, undiluted enzyme should be snap frozen, for example in a dry/ice ethanol bath or liquid nitrogen. Minimize freeze/thaws if possible, but very low volume aliquots (<5 μl) or storage of diluted enzyme are not recommended.

**REFERENCES:** 1) T.A. Milne *et al. Mol. Cell* 2002 **10** 1107; 2) A. Patel *et al. J. Biol. Chem.* 2008 **283** 32162; 3) J.J. Song & R.E. Kingston *J. Biol. Chem.* 2008 **283** 35258; 4) A. Yokoyama *et al. Mol. Cell. Biol.* 2004 **24** 5639; 5) Y. Dou *et al. Nat. Struct. Mol. Biol.* 2006 **13** 713; 6) A. Patel *et al. J. Biol. Chem.* 2009 **284** 24242; 7) Y.H. Goo *et al. Mol. Cell. Biol.* 2003 **23** 140; 8) K.I. Ansari & S.S. Mandal *FEBS J.* 2010 **277** 1790; 9) K.P. Nightingale *et al. J. Biol. Chem.* 2007 **282** 4408; 10) S. Lee *et al. Proc.Natl. Acad. Sci. USA* 2006 **103** 15392; 11) M.A. Mahajan & H.H. Samuels *Endocr. Rev.* 2005 **26** 583; 12) Q. Li *et al. Mol. Cell. Biol.* 2007 **27** 8073; 13) J. Lee *et al. Proc.Natl. Acad. Sci. USA* 2008 **105** 19229; 14) D. Kim *et al. Mol. Endocrinol.* 2009 **23** 1556; 15) J. Lee *et al. Proc.Natl. Acad. Sci. USA* 2009 **106** 8513; 16) S. Lee *et al. Mol. Endocrinol.* 2009 **23** 610; 17) K. Saigo *et al. Hum. Mutat.* 2008 **29** 703; 18) K.I. Ansari *et al. J. Mol. Endocrinol.* 2011 doi: 10.1530/JME-11-0078



**Coomassie blue stained SDS-PAGE (4-12% acrylamide) of 4 μg each of the purified components of the MLL4 complex.** MW markers are from top, 120, 90, 70, 60, 50, 40, 30, 20, 15, 10 kDa. M+W=WDR5/MLL4 coexpressed and purified as a complex; R=RbBP5; A=Ash2L; D=DPY-30. Note that His-DPY-30 (13 kDa) migrates anomalously at ~17 kDa.



**Methyltransferase Activity of MLL4 Complex with Nucleosomes or Core Histones.** Methylation determined as TCA-precipitable counts in a scintillation/filter plate assay. Reactions were 25 μL, 60 min., 30°C, with 1 μM [<sup>3</sup>H]-SAM and either HeLa Mono/di-nucleosomes (0.05 mg/mL as DNA; 0.38 μM nucleosome units) or chicken core histones (Millipore; 0.05 mg/mL as protein; ~equal histone H3 molarity to the HeLa nucleosomes).

This product is NOT intended for therapeutic or diagnostic use in animals or in humans.

Reaction Biology Corp., One Great Valley Parkway, Malvern PA 19355  
 Tel. 877-347-2368 Fax 610-722-0246 [sales@reactionbiology.com](mailto:sales@reactionbiology.com)  
[www.reactionbiology.com](http://www.reactionbiology.com)