

MTH2 (His) (NUDT15)

**CATALOG NO.:** NUC-11-308

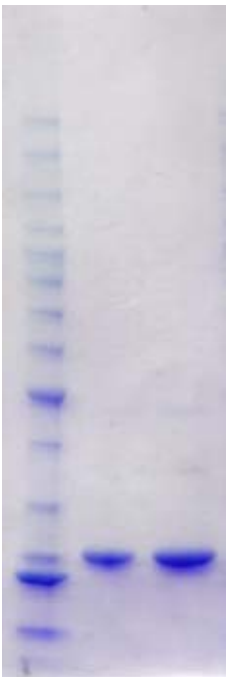
**LOT NO.:**

**DESCRIPTION:** Human Nudix (nucleoside diphosphate linked moiety X)-type motif 15 (NUDT15) (residues 2-164; Genbank Accession # NM\_018283.1; MW = 21.5 kDa) expressed as an N-terminal His-fusion protein in *E. coli*.

**PURITY:** >90% by SDS-PAGE

**SUPPLIED AS:**  $\mu\text{g}/\mu\text{L}$  in 50 mM Tris HCl, pH 7.5, 500 mM NaCl, 1 mM TCEP, 10 % glycerol

**STORAGE:** -70°C. Thaw quickly and store on ice before use. The remaining, unused, undiluted protein should be snap frozen, for example in a dry/ice ethanol bath or liquid nitrogen. Minimize freeze/thaws if possible, but very low volume aliquots (<5  $\mu\text{l}$ ) or storage of diluted enzyme is not recommended.



**Coomassie blue-stained SDS-PAGE (12% acrylamide) of 2  $\mu\text{g}$  and 4  $\mu\text{g}$  of RBC MTH2 (His).** MW markers (left) are, from top, 220, 160, 120, 100, 90, 80, 70, 60, **50**, 40, 30, 25, **20**, 15, 10 kDa.

Note that MTH2 (His) migrates at an anomalously high position relative to its actual mass, 21.5 kDa.

This product is NOT intended for therapeutic or diagnostic use in animals or in humans.