

SUV39H1-[CHR] (GST)

CATALOG NO.: RD-11-464

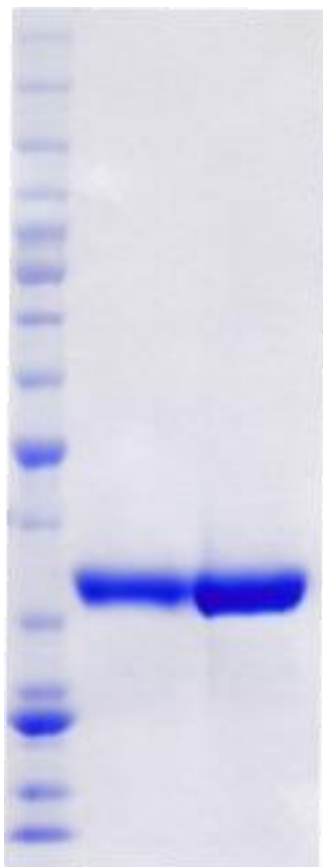
LOT NO.:

DESCRIPTION: Human recombinant SUV39H1 chromodomain region (residues 42-106; Genbank Accession # NM_003173.2 ; MW = 35.2 kDa) expressed as an N-terminal GST-fusion protein in *E. coli*.

PURITY: >95% by SDS-PAGE

SUPPLIED AS: ___ $\mu\text{g}/\mu\text{L}$ in 50 mM Tris HCl, pH 7.5, 500 mM NaCl, 10% glycerol, 1mM TCEP as determined by OD₂₈₀.

STORAGE: -70°C. Thaw quickly and store on ice before use. The remaining, unused, undiluted protein should be snap frozen, for example in a dry ice/ethanol bath or liquid nitrogen. Minimize freeze/thaws if possible, but very low volume aliquots (<5 μl) or storage of diluted enzyme is not recommended.



Coomassie blue-stained SDS-PAGE (4-12% acrylamide) of 4 and 10 μg of RBC SUV39H1-[CHR] (GST). MW markers (left) are, from top, 220, 160, 120, 100, 90, 80, 70, 60, 50, 40, 30, 25, 20, 15, 10 kDa.

This product is NOT intended for therapeutic or diagnostic use in animals or in humans.