

# BRWD1-2 Bromodomain Assay Service (ThermoShift)

BRWD1-2-His [Reader Domain Assay](#) for compound screening and profiling using the thermoshift assay format to measure compound binding to the target.

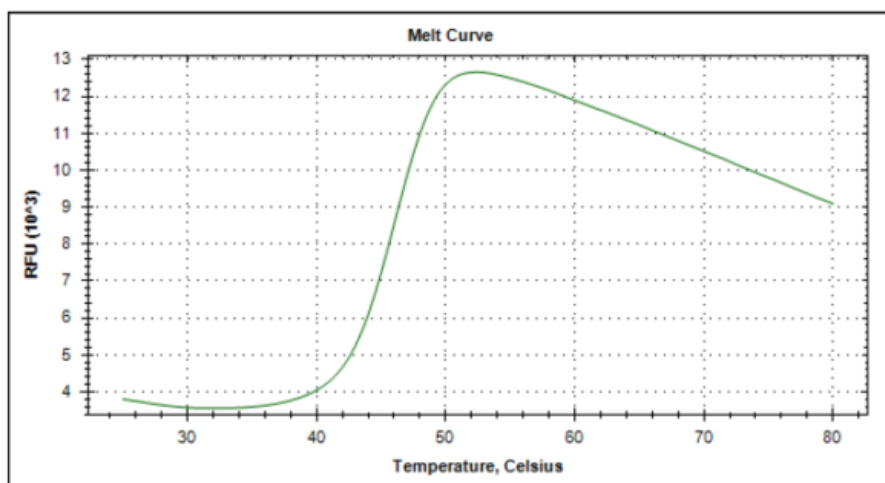
## Target Overview

<b>CAT#</b>	Tm-BRWD1-2-H
<b>Protein</b>	Human BRWD1-2 bromodomain, His-tagged
<b>Synonyms</b>	Bromodomain and WD repeat-containing protein 1; WDR9

## Assay Properties

<b>Readout</b>	Thermal stability change after ligand binding
<b>Concentration of protein in assay</b>	0.1 mg/ml (5.9 $\mu$ M)
<b>Concentration of compound in assay</b>	25 $\mu$ M
<b>Apo form <math>T_m</math> (<math>^{\circ}</math>C)</b>	46
<b>Reference Compound <math>T_m</math> s:</b>	No stabilization was observed in the presence of control compounds (JQ1, PFI1, CBP112, Bromosporine, SGC-CBP30, BET151, RVX-208, GSK2801 and PFI3)
<b>Scientific Information</b>	<a href="http://www.uniprot.org/uniprot/Q9NSI6">Q9NSI6</a> ( <a href="http://www.uniprot.org/uniprot/Q9NSI6">http://www.uniprot.org/uniprot/Q9NSI6</a> )
<b>Screening Location</b>	Malvern, USA
<b>Further information</b>	More information can be found on our website <a href="#">Reader Domain Assay Services</a> .

## Melt Curve



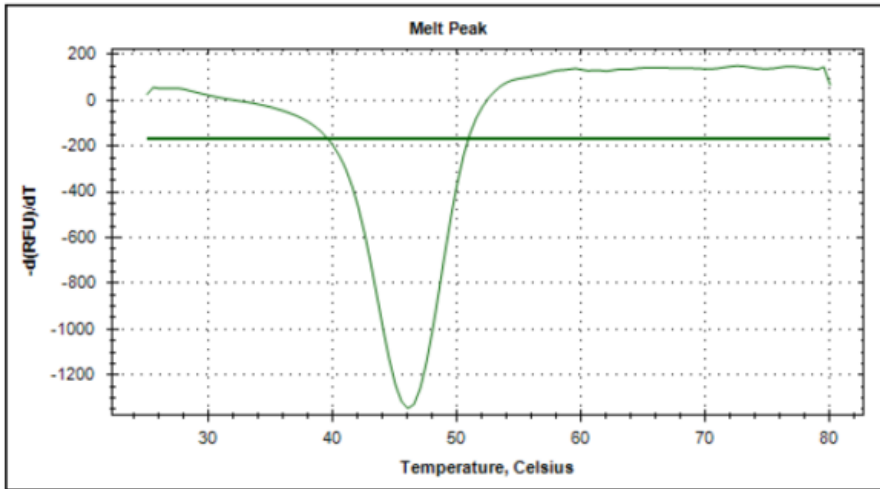
Let's Discover Together.

© Oct 2022 **Reaction Biology**. All rights reserved.

[https://www.reactionbiology.com/datasheet/brwd1-2-hreader\\_thermoshift\\_malvern](https://www.reactionbiology.com/datasheet/brwd1-2-hreader_thermoshift_malvern)



Melt Peak



Let's Discover Together.

© Oct 2022 **Reaction Biology**. All rights reserved.

[https://www.reactionbiology.com/datasheet/brwd1-2-hreader\\_thermoshift\\_malvern](https://www.reactionbiology.com/datasheet/brwd1-2-hreader_thermoshift_malvern)

