

# TAF1-2 Bromodomain Assay Service (ThermoShift)

TAF1-2-GST [Reader Domain Assay](#) for compound screening and profiling using the thermoshift assay format to measure compound binding to the target.

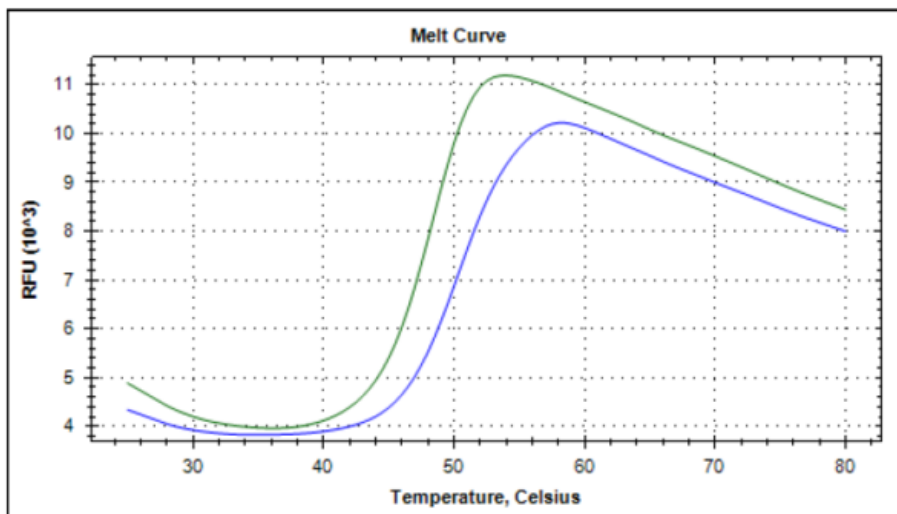
## Target Overview

<b>CAT#</b>	Tm-TAF1-2-GST
<b>Protein</b>	Human TAF1-2 bromodomain, GST-tagged
<b>Synonyms</b>	Transcription initiation factor TFIIID subunit 1; p250, TAFII-250, Cell cycle gene 1 protein

## Assay Properties

<b>Readout</b>	Thermal stability change after ligand binding
<b>Concentration of protein in assay</b>	0.1 mg/ml (2.3 $\mu$ M)
<b>Concentration of compound in assay</b>	25 $\mu$ M
<b>Apo form <math>T_m</math> (<math>^{\circ}</math>C)</b>	48,5
<b>Reference Compound <math>T_m</math> s:</b>	Bromosportine - 2 (Blue) No stabilization was observed in the presence of other control compounds (JQ1, PFI1, CBP112, SGC-CBP30, BET151, RVX-208, GSK2801 and PFI3)
<b>Scientific Information</b>	<a href="http://www.uniprot.org/uniprot/P21675">P21675</a> ( <a href="http://www.uniprot.org/uniprot/P21675">http://www.uniprot.org/uniprot/P21675</a> )
<b>Screening Location</b>	Malvern, USA
<b>Further information</b>	More information can be found on our website <a href="#">Reader Domain Assay Services</a> .

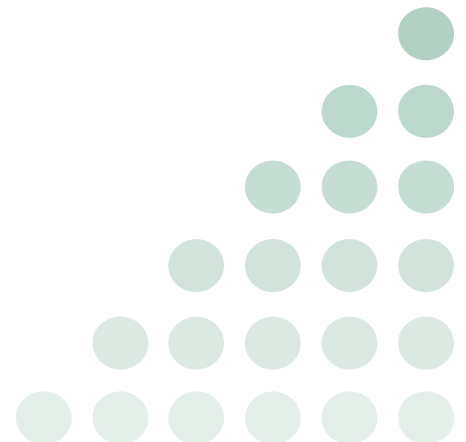
## Melt Curve



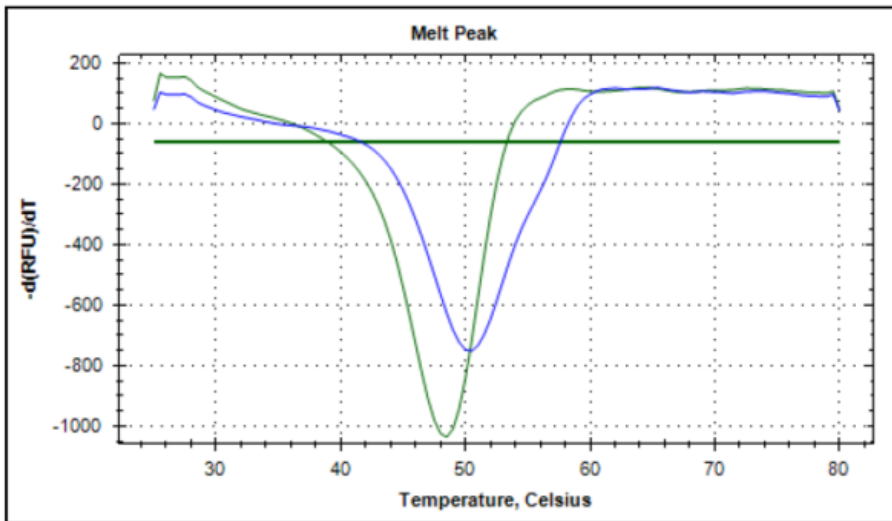
Let's Discover Together.

© May 2022 **Reaction Biology**. All rights reserved.

[https://www.reactionbiology.com/datasheet/taf1-2-gstreader\\_thermoshift\\_malvern](https://www.reactionbiology.com/datasheet/taf1-2-gstreader_thermoshift_malvern)



Melt Peak



Let's Discover Together.

© May 2022 **Reaction Biology**. All rights reserved.

[https://www.reactionbiology.com/datasheet/taf1-2-gstreader\\_thermoshift\\_malvern](https://www.reactionbiology.com/datasheet/taf1-2-gstreader_thermoshift_malvern)

