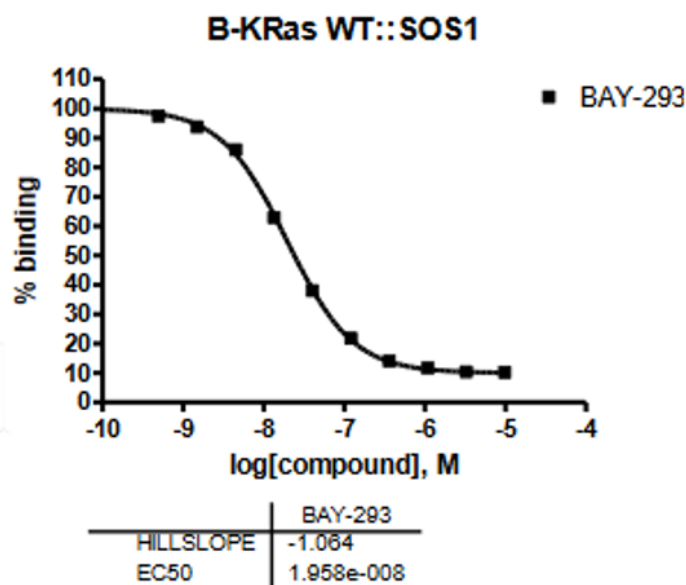


K-Ras::SOS1 Protein-Protein Interaction Assay Service (HTRF)

KRAS-related Assays: K-Ras::SOS1 Protein-Protein Interaction Assay Service for compound screening and profiling using the HTRF assay format to measure the binding of K-Ras and SOS1

Target Overview					
Target	Human SOS1, human K-Ras				
HGNC	SOS1, KRAS				
Protein	K-Ras (aa 2-169), biotinylated, untagged. Expressed in E. coli. SOS1 (aa 564-1069), His/strep tagged. Expressed in E. coli.				
Synonyms	SOS1: Son of sevenless homolog 1, GF1, GGF1, GINGF, HGF, NS4 K-Ras: C-K-RAS, CFC2, K-RAS2A, K-RAS2B, K-RAS4A, K-RAS4B, KI-RAS, KRAS1, KRAS2, NS, NS3, RASK2, Kras				
Assay Properties					
Scientific information	SOS1: Q07889 (https://www.uniprot.org/uniprot/Q07889) K-Ras: P01116 (https://www.uniprot.org/uniprot/P01116)				
Screening location	Malvern, PA, US				
Reaction	Binding of K-Ras-GDP to SOS1				
Readout	HTRF				
Reference compound EC50s	<table border="1"> <thead> <tr> <th>Compound</th> <th>EC50 (nM)</th> </tr> </thead> <tbody> <tr> <td>BAY-293</td> <td>20</td> </tr> </tbody> </table>	Compound	EC50 (nM)	BAY-293	20
Compound	EC50 (nM)				
BAY-293	20				

Reference compound BAY-293 inhibits the protein-protein interaction of K-Ras-GDP and SOS1



Let's Discover Together.

