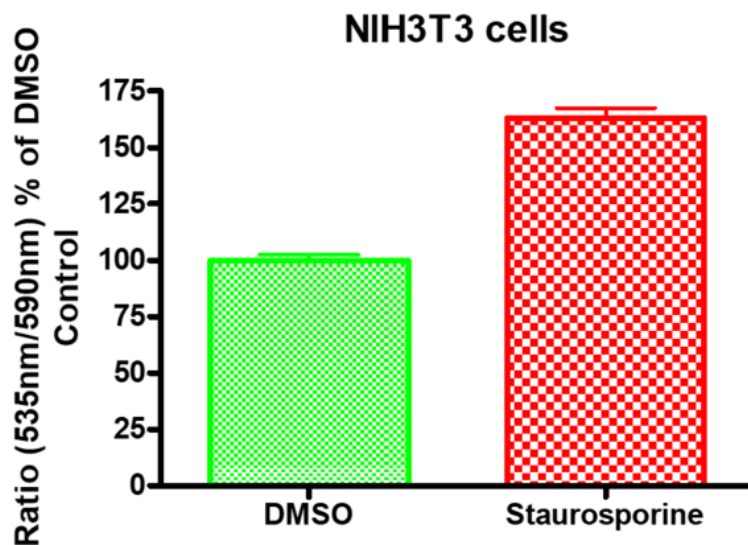


# Mitochondrial Membrane Potential Assay

[Apoptosis assays](#) are available for single and multi-time point analysis as well as real-time live-cell imaging.

Target Overview	
Cell Line	NIH-3T3 cell line from ATCC
Assay Properties	
Assay Format	384-well plate format using JC-10 Mitochondrial Membrane Potential Assay
Assay Protocol	NIH3T3 cells were treated with DMSO or 1 $\mu$ M staurosporine for 6 hours. The mitochondrial membrane potential changes were measured by JC-10 mitochondrial membrane potential assay. The fluorescent intensities for both aggregates and monomeric forms of JC-10 were measured at Ex/Em=490/535 nm and Ex/Em=490/590 nm with an Envision microplate reader. The ratio of mitochondrial membrane potential change was plotted using the GraphPad Prism program.
Readout	Fluorescent signal
Reference Compound	Staurosporine
Screening location	Malvern, PA, USA



Let's Discover Together.

