

JARID1B (KDM5B)

CATALOG NO.: PDM-21-360

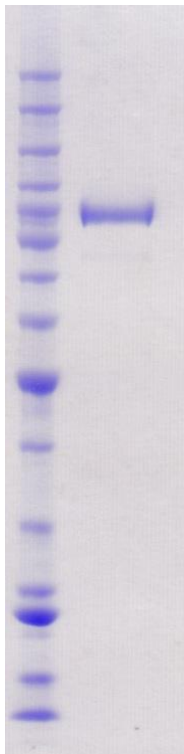
LOT NO.:

DESCRIPTION: Human recombinant JARID1B (residues 2-752; Genbank Accession # NM_006618.3; MW = 90.7 kDa) expressed with an N-terminal FLAG tag in *Sf21* insect cells.

PURITY: >95% by SDS-PAGE

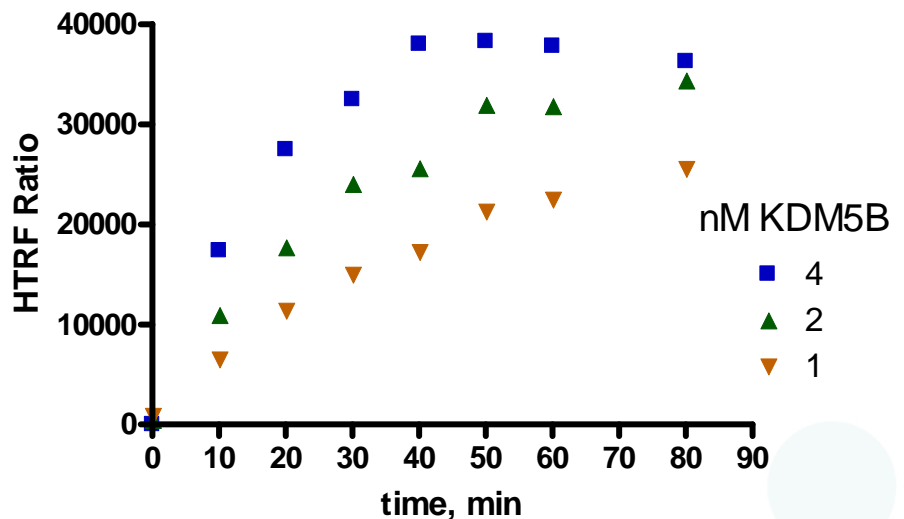
SUPPLIED AS: $\mu\text{g}/\mu\text{L}$ in 50 mM Tris HCl, pH 7.5, 150 mM NaCl, 10% glycerol, 1 mM TCEP

STORAGE: -70°C. Thaw quickly and store on ice before use. The remaining, unused, undiluted protein should be snap frozen, for example in a dry ice ethanol bath or liquid nitrogen. Minimize freeze/thaws if possible, but very low volume aliquots (<5 μl) or storage of diluted enzyme is not recommended.



Coomassie blue-stained SDS-PAGE (12% acrylamide) of 4 μg of RBC JARID1B (MW markers (left) are, from top, 220, 160, 120, 100, 90, 80, 70, 60, 50, 40, 30, 25, 20, 15, 10 kDa.

Demethylase activity of KDM5B



KDM5B Demethylase Activity Assay. B-H3(1-21)K4Me3 peptide demethylation was monitored using Cisbio HTRF detection (cat # 61KA2KAD and 610SAXLA). The 10 μL reaction contained 20 μM Fe(II), 20 μM α -KG, 100 μM ascorbate, 30 nM peptide and variable concentration of KDM5B. Reactions were quenched at specified time by the addition of detection reagent. Fluorescence emission (665 and 620 nm) was read using a Synergy H4 plate reader (Biotek) following 2h incubation.

This product is not intended for therapeutic or diagnostic use in animals or in humans.

Reaction Biology

1 Great Valley Parkway, Malvern PA, USA 19355
requests@reactionbiology.com www.reactionbiology.com