

KDM4A (StreptII)

(Lysine-Specific Demethylase 4A)

CATALOG NO.: PDM-11-355

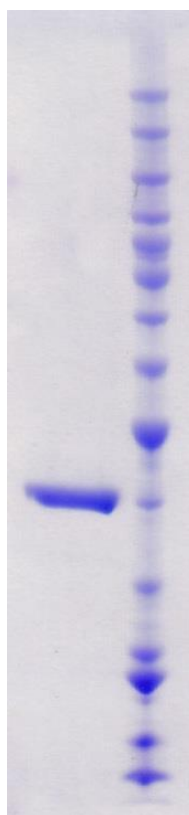
LOT NO.:

DESCRIPTION: Human recombinant KDM4A (residues 2-350; Genbank Accession # NM_014663.2; MW = 42.6 kDa) expressed with a C-terminal StreptII tag in *E. coli*.

PURITY: >90% by SDS-PAGE

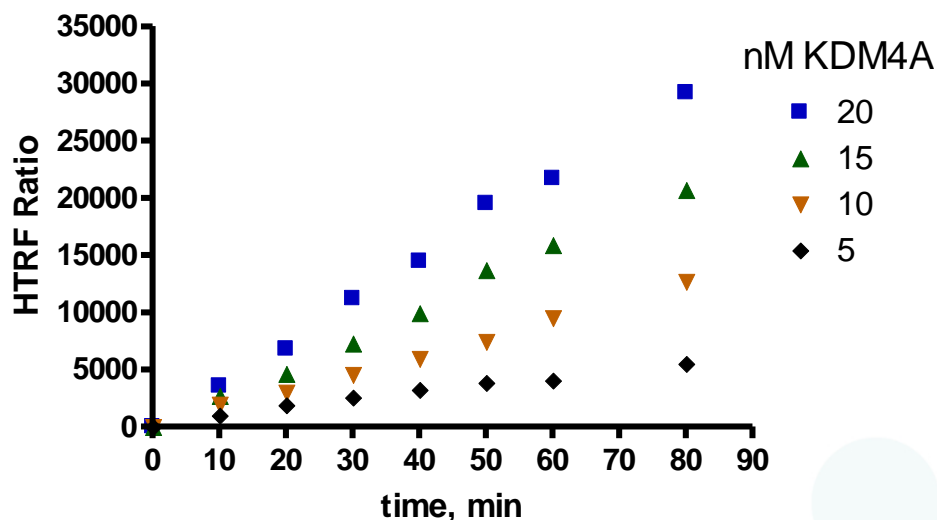
SUPPLIED AS: ___ µg/µL in 20 mM Tris HCl, pH 7.5, 150 mM NaCl, 5% glycerol

STORAGE: -70°C. Thaw quickly and store on ice before use. The remaining, unused, undiluted protein should be snap frozen, for example in a dry ice ethanol bath or liquid nitrogen. Minimize freeze/thaws if possible, but very low volume aliquots (<5 µl) or storage of diluted enzyme is not recommended.



Coomassie blue-stained SDS-PAGE (12% acrylamide) of 4 µg of RBC KDM4A (StreptII). MW markers (right) are, from top, 220, 160, 120, 100, 90, 80, 70, 60, 50, 40, 30, 25, 20, 15, 10 kDa.

Demethylase activity of KDM4A



KDM4A Demethylase Activity Assay. B-H3(21-44)K36Me3 peptide demethylation was monitored using Cisbio HTRF detection (cat # 61KD2KAD). The 10 µL reaction contained 12.5 µM Fe(II), 20 µM α-KG, 100 µM ascorbate and 60 nM peptide and variable concentration of KDM4A. Reactions were quenched at specified time by the addition of detection reagent. Fluorescence emission (665 and 620 nm) was read using a Synergy H4 plate reader (Biotek) following 2h incubation.

This product is not intended for therapeutic or diagnostic use in animals or in humans.

Reaction Biology

1 Great Valley Parkway, Malvern PA, USA 19355

requests@reactionbiology.com www.reactionbiology.com