

Biotinylated KRAS (G12R)

CATALOG NO.: MSC-11-550

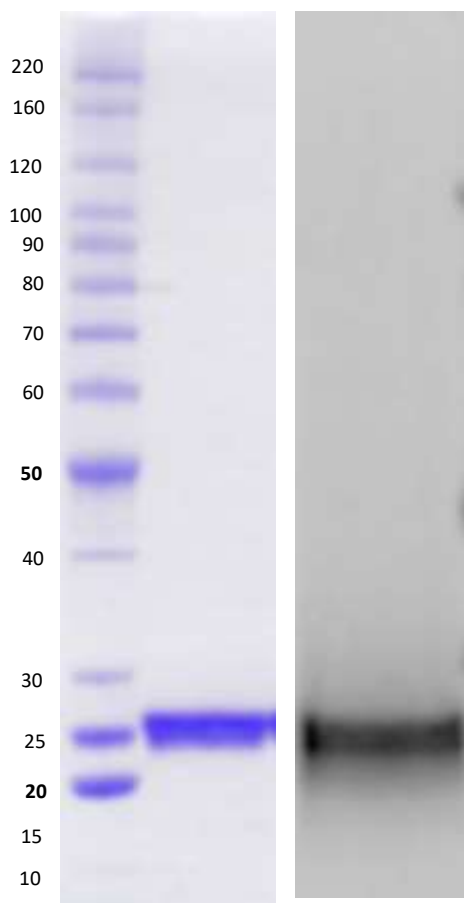
LOT NO.:

DESCRIPTION: Mutant human recombinant KRAS (G12R) with arginine (R) substituted for glycine-12 (G12) (otherwise contains wildtype residues 2-169; Genbank Accession #NP_004976.2; MW = 23.75 kDa) expressed as an N-terminal 8xHis-fusion and C-terminal BSP-tag protein in *E. coli*.

PURITY: >90% by SDS-PAGE.

SUPPLIED AS: µg/µL in 25 mM Tris, pH 8.0, 100 mM NaCl, 5% glycerol, 1 mM TCEP, 1 mM MgCl₂ as determined by OD₅₉₅.

STORAGE: -70°C. Thaw quickly and store on ice before use. The remaining, unused, undiluted protein should be snap frozen, for example in a dry ice/ethanol bath or liquid nitrogen. Minimize freeze/thaws if possible, but very low volume aliquots (<5 µl) or storage of diluted enzyme is not recommended.



Coomassie blue-stained SDS-PAGE (4-12% acrylamide) of 4 µg of RBC biotinylated KRAS (G12R).
 MW markers are indicated.

Western blot SDS-PAGE (8-16% acrylamide) of 0.75 µg biotinylated KRAS (G12R). Biotinylated protein was detected using IRDye 680LT conjugated streptavidin (Licor IRDye680LT 926-68031) and imaged using LI-COR Odyssey Fx.

This product is not intended for therapeutic or diagnostic use in animals or in humans.

Reaction Biology

1 Great Valley Parkway, Malvern PA, USA 19355

requests@reactionbiology.com www.reactionbiology.com