

KRAS (wildtype) (GST)

CATALOG NO.: MSC-11-537

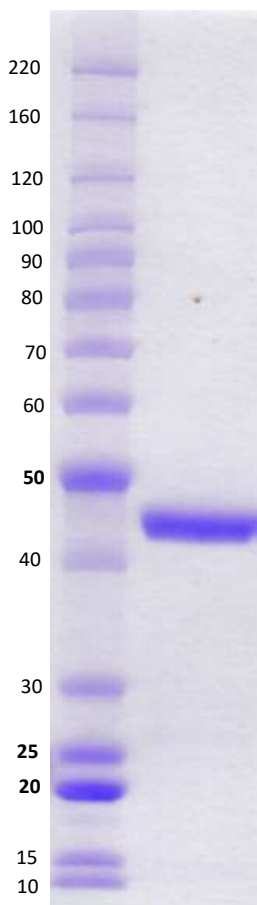
LOT NO.:

DESCRIPTION: Human recombinant KRAS (wildtype) (residues 2-169; Genbank Accession #NP_004976.2; MW = 45.98 kDa) expressed as an N-terminal GST-fusion protein in *E. coli*.

PURITY: > 90% by SDS-PAGE.

SUPPLIED AS: $\mu\text{g}/\mu\text{L}$ in 25 mM Tris, pH 8.0, 100 mM NaCl, 1 mM TCEP, 5% glycerol, 5 mM MgCl_2 as determined by OD_{595} .

STORAGE: -70°C . Thaw quickly and store on ice before use. The remaining, unused, undiluted protein should be snap frozen, for example in a dry ice/ethanol bath or liquid nitrogen. Minimize freeze/thaws if possible, but very low volume aliquots (<5 μl) or storage of diluted enzyme is not recommended.



Coomassie blue-stained SDS-PAGE (4-12% acrylamide) of 4 μg of RBC KRAS (wildtype) (GST). MW markers (left) are, from top, 220, 160, 120, 100, 90, 80, 70, 60, 50, 40, 30, 25, 20, 15, 10 kDa.

This product is not intended for therapeutic or diagnostic use in animals or in humans.

Reaction Biology

1 Great Valley Parkway, Malvern PA, USA 19355

requests@reactionbiology.com www.reactionbiology.com