

LSD2

CATALOG NO.: KDM-21-614

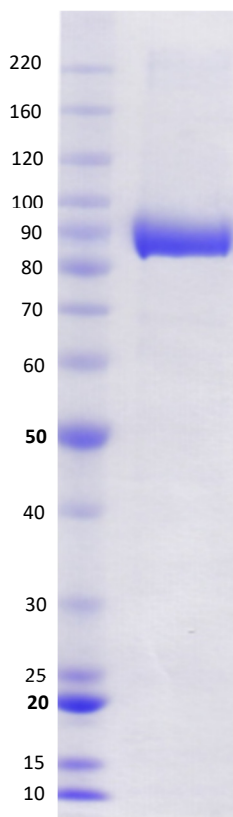
LOT NO.:

DESCRIPTION: Human recombinant LSD2 (residues 2-822; Genbank Accession #XM_005248926.1; MW = 96.35 kDa) expressed as an N-terminal His and C-terminal StrepII fusion protein in an insect cell/baculovirus expression system.

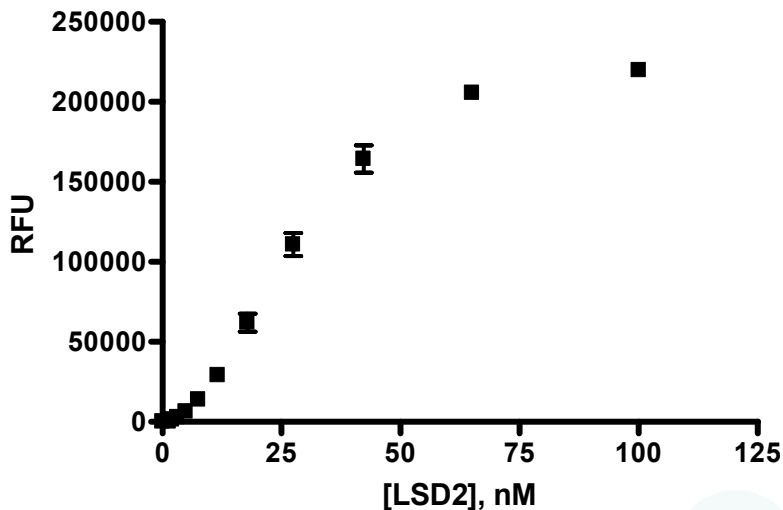
PURITY: >90% by SDS-PAGE.

SUPPLIED AS: ___ µg/µL in 50 mM Tris, pH 7.5, 500 mM NaCl, 5% glycerol as determined by OD₂₈₀.

STORAGE: -70°C. Thaw quickly and store on ice before use. The remaining, unused, undiluted protein should be snap frozen, for example in a dry ice/ethanol bath or liquid nitrogen. Minimize freeze/thaws if possible, but very low volume aliquots (<5 µl) or storage of diluted enzyme is not recommended.



Coomassie blue-stained SDS-PAGE (8-16% acrylamide) of 4 µg of RBC LSD2. MW markers (left) are, from top, 220, 160, 120, 100, 90, 80, 70, 60, 50, 40, 30, 25, 20, 15, 10 kDa.



LSD2 Demethylase Activity Assay. H3(1-21)K4me2 peptide demethylation was monitored using detection of H₂O₂ production. The 10 µL reaction contained 5 µM peptide and a variable concentration of LSD2. H₂O₂ production was detected by the addition of a HRP/Amplex Red detection mixture after 60 minutes. Fluorescence emission (590 nm) was read on an CLARIOstar reader (BMG Labtech).

This product is not intended for therapeutic or diagnostic use in animals or in humans.

Reaction Biology

1 Great Valley Parkway, Malvern PA, USA 19355
 requests@reactionbiology.com www.reactionbiology.com