

MINA (aa 2-465), RIOX2

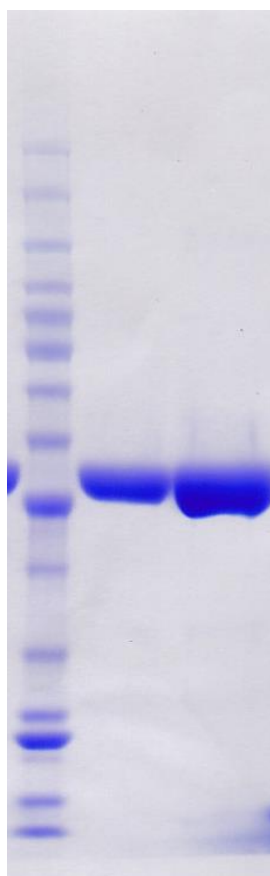
CATALOG NO.: PDM-21-668 **LOT:**

DESCRIPTION: Human recombinant MINA protein (residues 2-465; Genbank Accession # NM_153182.3; MW = 55.3 kDa) expressed with an N-terminal StreptII tag in *Sf9* insect cells.

PURITY: > 95% by SDS-PAGE.

SUPPLIED AS: µg/µL in 50mM Tris pH 8.0, 300mM NaCl, 5% glycerol, 0.5mM TCEP as determined by OD₂₈₀.

STORAGE: -70°C. Thaw quickly and store on ice before use. The remaining, unused, undiluted protein should be snap frozen, for example in a dry ice/ethanol bath or liquid nitrogen. Minimize freeze/thaws if possible, but very low volume aliquots (<5 µl) or storage of diluted enzyme is not recommended.



Coomassie blue-stained SDS-PAGE (4-12% acrylamide) of 4 and 10 µg of RBC MINA (StreptII). MW markers (left) are, from top, 220, 160, 120, 100, 90, 80, 70, 60, 50, 40, 30, 25, 20, 15, & 10 kDa.

Enzymatic activity has not been tested.

This product is not intended for therapeutic or diagnostic use in animals or in humans.

Reaction Biology

1 Great Valley Parkway, Malvern PA, USA 19355

requests@reactionbiology.com www.reactionbiology.com