

PHF8 ( $\alpha$  2-1060)

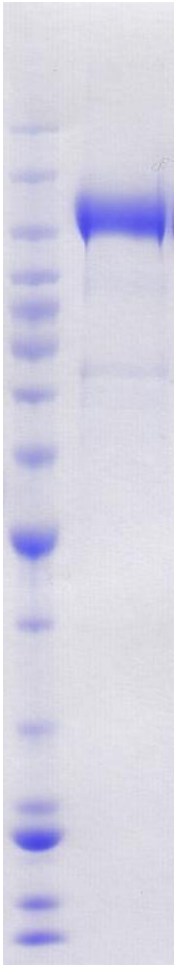
CATALOG NO.: PDM-21-667      LOT:

**DESCRIPTION:** Human recombinant PHF8 (residues 2-1060; Genbank Accession # NM\_001184896; MW = 120.5kDa) expressed with an N-terminal StrepII tag in *Sf9* insect cells.

**PURITY:** > 85% by SDS-PAGE.

**SUPPLIED AS:**  $\mu$ g/ $\mu$ L in 50 mM Tris HCl, pH 8.0, 300 mM NaCl, 5% glycerol as determined by OD<sub>280</sub>.

**STORAGE:** -70°C. Thaw quickly and store on ice before use. The remaining, unused, undiluted protein should be snap frozen, for example in a dry ice/ethanol bath or liquid nitrogen. Minimize freeze/thaws if possible, but very low volume aliquots (<5  $\mu$ l) or storage of diluted enzyme is not recommended.



**Coomassie blue-stained SDS-PAGE (4-12% acrylamide) of 4  $\mu$ g of RBC PHF8 (StrepII).** MW markers (left) are, from top, 220, 160, 120, 100, 90, 80, 70, 60, **50**, 40, 30, 25, **20**, 15, & 10 kDa.

---

*Enzymatic activity has not been tested.*

---

This product is not intended for therapeutic or diagnostic use in animals or in humans.

**Reaction Biology**

1 Great Valley Parkway, Malvern PA, USA 19355

requests@reactionbiology.com www.reactionbiology.com