

**Biotinylated KRAS (G12S)**

**CATALOG NO.:** MSC-11-562

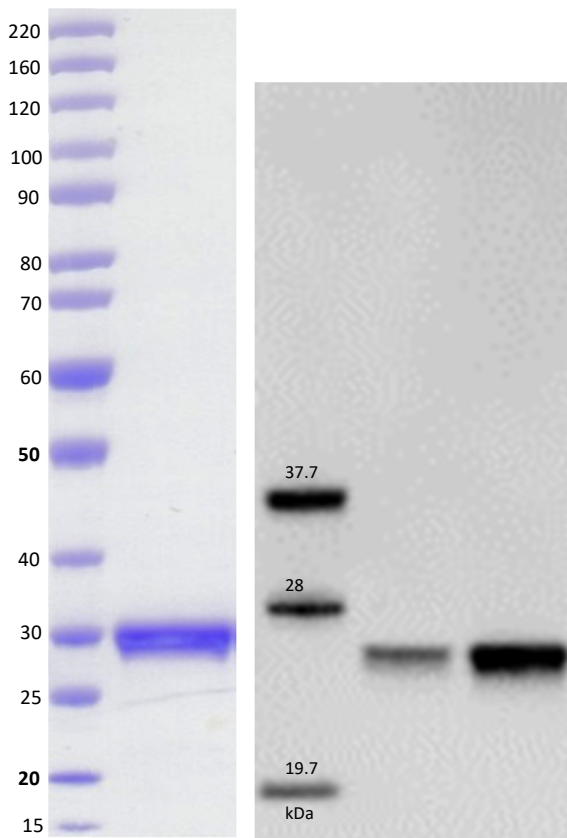
**LOT NO.:**

**DESCRIPTION:** Mutant human recombinant KRAS (G12S) with serine (S) substituted for glycine-12 (G12) (otherwise contains wildtype residues 2-169; Genbank Accession #NP\_004976.2; MW = 23.8 kDa) expressed as an N-terminal 8xHis-fusion and C-terminal BSP-tag protein in *E. coli*.

**PURITY:** > 95% by SDS-PAGE.

**SUPPLIED AS:** \_\_\_ µg/µL in 25 mM Tris, pH 8.0, 500 mM NaCl, 5% glycerol, 1 mM TCEP, 5 mM MgCl<sub>2</sub>, and 2 mM DTT as determined by OD<sub>595</sub>.

**STORAGE:** -70°C. Thaw quickly and store on ice before use. The remaining, unused, undiluted protein should be snap frozen, for example in a dry ice/ethanol bath or liquid nitrogen. Minimize freeze/thaws if possible, but very low volume aliquots (<5 µl) or storage of diluted enzyme is not recommended.



**Coomassie blue-stained SDS-PAGE (8-16% acrylamide) of 4 µg of RBC biotinylated KRAS (G12S).** MW markers of ladder are 220, 160, 120, 100, 90, 80, 70, 60, 50, 40, 30, 25, 20, 15kDa.

**Western blot** of 0.25 and 0.75µg biotinylated KRAS (G12S). Biotinylated protein was detected using IRDye 680TL conjugated streptavidin (Licor IRDye690LT 926-68031) and imaged using LI-COR Odyssey Fx. (MW shown)

This product is not intended for therapeutic or diagnostic use in animals or in humans.

Reaction Biology

1 Great Valley Parkway, Malvern PA, USA 19355  
requests@reactionbiology.com www.reactionbiology.com