

cRAF

CATALOG NO.: MSC-11-528

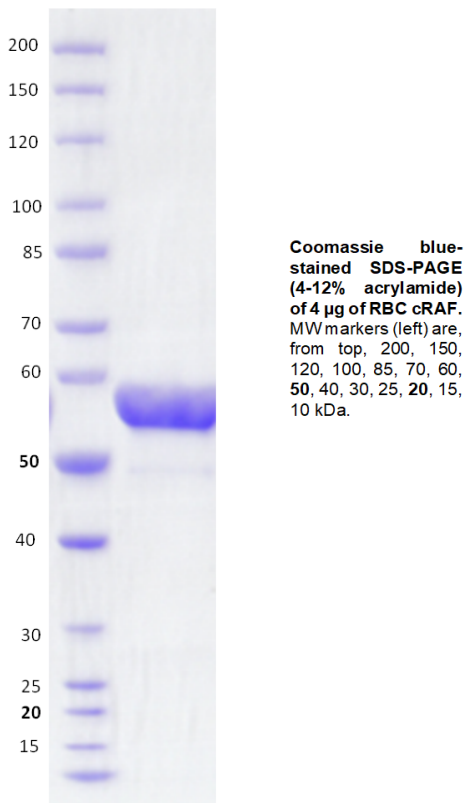
LOT NO.:

DESCRIPTION: Human recombinant cRAF (residues 2-303; Genbank Accession #NM_002880.3; MW = 60.52 kDa) expressed as an N-terminal GST-fusion protein in *E. coli*

PURITY: >85% by SDS-PAGE.

SUPPLIED AS: µg/µL in 50 mM Tris-HCl, pH 7.5, 500 mM NaCl, 0.25 mM TCEP, 10% glycerol as determined by OD₅₉₅.

STORAGE: -70°C. Thaw quickly and store on ice before use. The remaining, unused, undiluted protein should be snap frozen, for example in a dry ice/ethanol bath or liquid nitrogen. Minimize freeze/thaws if possible, but very low volume aliquots (<5 µl) or storage of diluted enzyme is not recommended.



Kras/cRAF PPI assay. cRAF binding to Kras::GppNHp and Kras::GDP was assessed using Perkin Elmer HTRF detection (cat #61GSTTLB and 610SAXLB). The 15µL reaction contained 10nM cRAF, variable concentration of Kras and detection mix. Fluorescence emission (665 and 620nm) was read using PHERAstar reader (BMGLabtech) following 2h incubation.

This product is not intended for therapeutic or diagnostic use in animals or in humans.

Reaction Biology

1 Great Valley Parkway, Malvern PA, USA 19355
 requests@reactionbiology.com www.reactionbiology.com