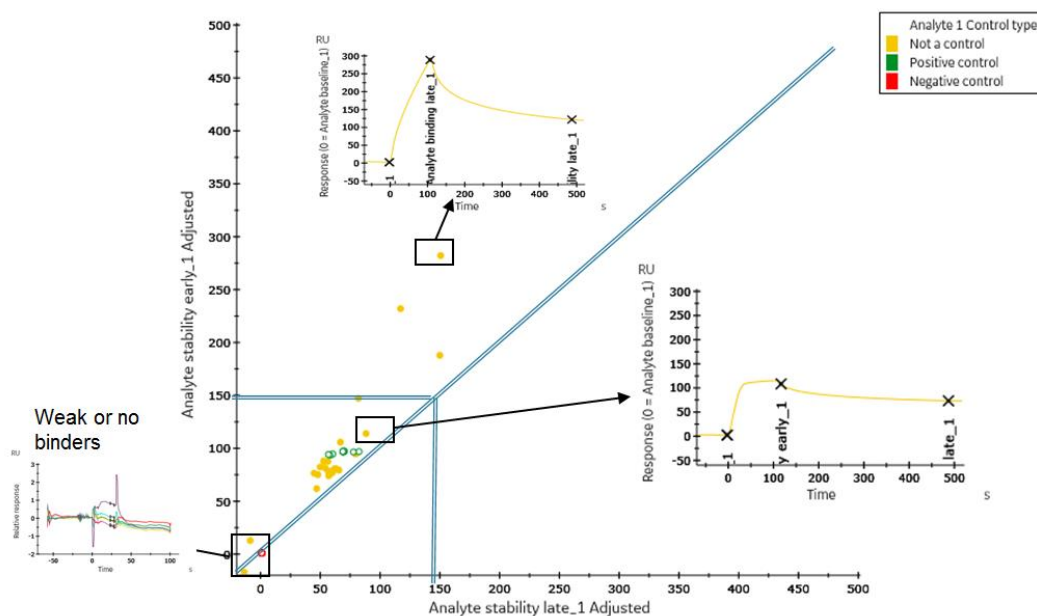


## NSD2

(Probable histone-lysine N-methyltransferase NSD2, Multiple myeloma SET domain-containing protein, Nuclear SET domain-containing protein 2, Protein trithorax-5, Wolf-Hirschhorn syndrome candidate 1 protein, WHSC1, KIAA1090, MMSET, TRX5)

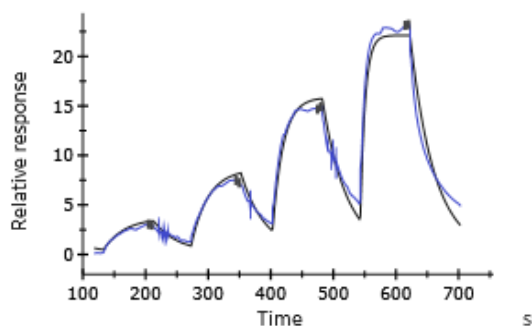
- **CAT#:** NSD2-SET
- **Enzyme:** Human NSD2, SET domain
- **Scientific Information:** O96028 (<http://www.expasy.org/uniprot/O96028>)

### Hit confirmation at 25 $\mu$ M

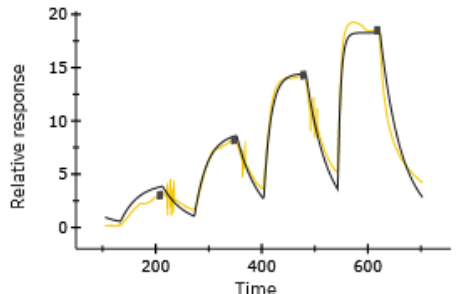


### Binding kinetics of SAM/SAH to NSD2-SET domain

RU SAM; NSD2-SET; 1:1 binding



RU SAH; NSD2-SET; 1:1 binding



SAM/SAH ( $\mu$ M)
25.00
8.33
2.78
0.93

Compound	$k_a$ (1/Ms)	$k_d$ (1/s)	KD (M)	to 50% dissociation ( $t_{1/2}$ ) (s)
SAM	4.33E+03	2.57E-02	5.94E-06	27
SAH	6.83E+03	2.38E-02	3.48E-06	29