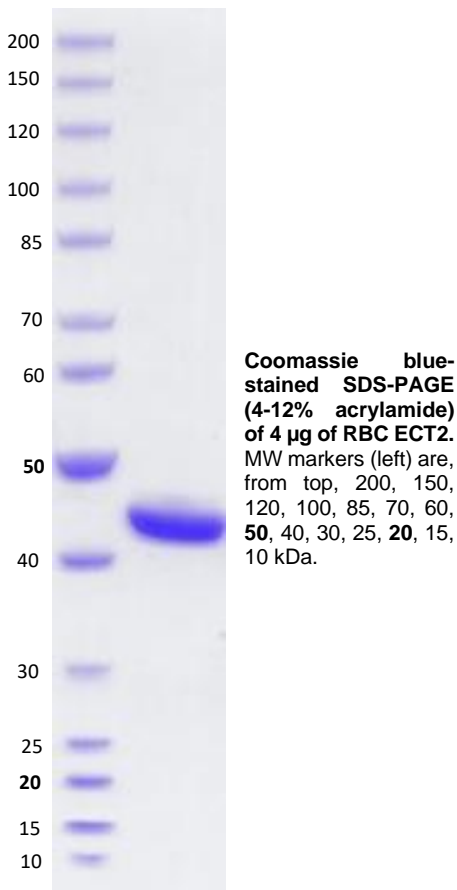


ECT2**CATALOG NO.:** MSC-11-692**LOT NO.:****DESCRIPTION:** Human recombinant ECT2 (residues 408-790; Genbank Accession # NM_001258315.2; MW = 46.0 kDa) expressed as a C-terminal StrepII-fusion protein in *E. coli***PURITY:** > 90% by SDS-PAGE.**SUPPLIED AS:** ___ µg/µL in 25 mM Tris-HCl, pH 7.5, 150 mM NaCl, 0.5 mM TCEP, 5 mM MgCl₂, 5% glycerol as determined by OD₂₈₀.**STORAGE:** -70°C. Thaw quickly and store on ice before use. The remaining, unused, undiluted protein should be snap frozen, for example in a dry ice/ethanol bath or liquid nitrogen. Minimize freeze/thaws if possible, but very low volume aliquots (<5 µl) or storage of diluted enzyme is not recommended.

This product is not intended for therapeutic or diagnostic use in animals or in humans.

Reaction Biology

1 Great Valley Parkway, Malvern PA, USA 19355

requests@reactionbiology.com www.reactionbiology.com