

RecQL (aa 49-615) (ATP-dependent DNA helicase Q1)

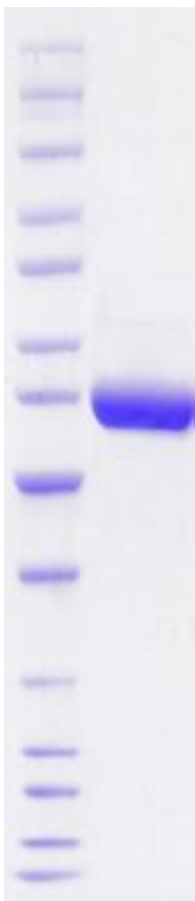
CATALOG NO.: HLC-11-684

DESCRIPTION: Human recombinant RecQL protein (residues 49-615; Genbank Accession # NM_002907.3; MW = 66.8 kDa) expressed as a C-terminal StrepII tag in *E. coli*.

PURITY: > 95% by SDS-PAGE.

SUPPLIED AS: ___ µg/µL in 50mM Tris-HCl pH 7.5, 500mM NaCl, 10% glycerol, 0.25mM TCEP as determined by OD₂₈₀.

STORAGE: -70°C. Thaw quickly and store on ice before use. The remaining, unused, undiluted protein should be snap frozen, for example in a dry ice/ethanol bath or liquid nitrogen. Minimize freeze/thaws if possible, but very low volume aliquots (<5 µl) or storage of diluted enzyme is not recommended.



Coomassie blue-stained SDS-PAGE (4-12% acrylamide) of 4 µg of RBC RecQL (aa 49-615). MW markers (left) are, from top, 200, 150, 120, 100, 85, 70, 60, **50**, 40, 30, 25, **20**, 15, & 10 kDa.

Enzymatic activity has not been tested.

This product is not intended for therapeutic or diagnostic use in animals or in humans.

Reaction Biology

1 Great Valley Parkway, Malvern PA, USA 19355

requests@reactionbiology.com www.reactionbiology.com