

➤ Subcutaneous mouse tumor models

Subcutaneously implanted tumor cells represent a convenient means to test novel potential anticancer drugs *in vivo*. A large variety of human and murine cell lines derived from both, solid tumors or leukemias, covering a wide range of tumor geno- and phenotypes, have been adapted to grow in a murine host, and thus allow testing of a compound in the appropriate tumor model.

➤ LS 174T cells

Human LS 174T cells were isolated from a patient with a colorectal adenocarcinoma. LS 174T is a variant of LS 180 (CL-187).

A Hematoxylin-Eosin stained paraffin section of a subcutaneous LS 174T xenograft is shown in Fig. 1.

As routine quality controls, the cells are regularly checked for Mycoplasma contamination and authenticity (via STR DNA Typing).

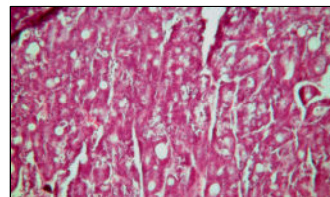


Figure 1: Hematoxylin-Eosin stained paraffin section of a subcutaneous LS 174T xenograft

➤ Expression of oncology relevant proteins

Expression data using western blotting and immunohistochemistry are available for a selection of protein kinases. For information, please inquire!

➤ Tumor growth *in vivo*

LS 174T cells harvested from tissue culture flasks are implanted into the subcutaneous space of the left flank of the mice. Resulting tumors are monitored by caliper measuring twice weekly.

Animal weights are measured three times weekly.

Animal behaviour is monitored daily.

All mice are maintained in separated isolated housing at constant temperature and humidity.

Accessory services: tumor wet weight and volume measurement at necropsy, blood sampling, flow cytometry, paraffin embedding of tumor tissue, histological & pathological analysis, cytokine determination, provision of tumor tissue for target validation.

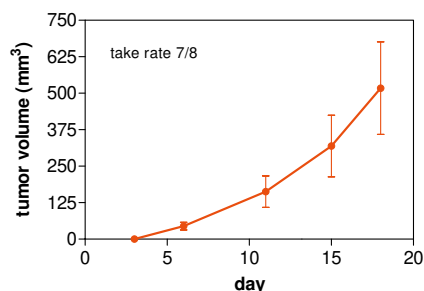


Figure 2: Tumor growth of LS 174T cells in a subcutaneous xenograft *in vivo*, tumor volume, mean values \pm SEM

➤ Study example

If you are interested in receiving information on potential positive controls please reach out to our Business Development team at requests@reactionbiology.com.