

➤ Mouse-derived isograft tumor models (MDI)

Today, cancer research tends to focus on development of novel cancer immunotherapies. While classical syngeneic mouse models are based on the implantation of cultured cell lines, Reaction Biology's mouse-derived isograft (MDI) tumor models make use of tumor tissue that has been propagated in mice with a very low number of passages. Hence, the major advantage of these novel and unique spontaneous-derived or carcinogen-induced MDI tumor models is the preservation of primary tumor phenotype and intratumoral immune cell populations.

➤ Tumor tissue JA-0017

Origin: adenocarcinoma / murine
Description: spontaneous arising
Source: Reaction Biology GmbH

➤ Study example

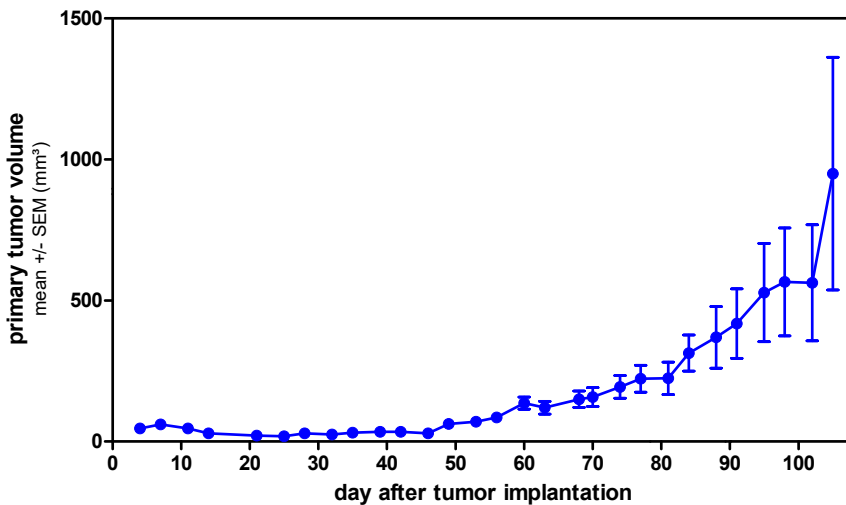


Figure 1: JA-0017 tumor growth monitored by caliper

➤ Quality assurance

- Routine health monitoring of sentinel animals (according to FELASA guide lines)
- Adherence to the 5R rules (reduce, refine, replace, responsible, remember)

Note: Graphs depicted are derived from study examples. Each study is a biological system of its own and subject to intrinsic variation.