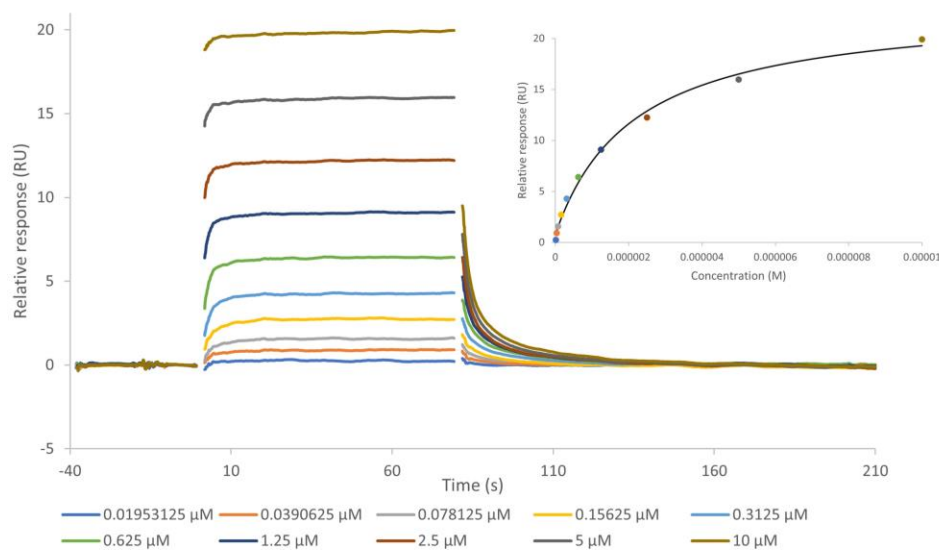


# TPMT SPR Assay Service

TPMT for direct binding screening and profiling of test substance with [surface plasmon resonance \(SPR\)](#) technique.

Target Overview	
Target	TPMT
HGNC Symbol	TPMT
Synonyms	Thiopurine S-methyltransferase
Scientific Information	<a href="https://www.uniprot.org/uniprotkb/P51580">P51580</a> ( <a href="https://www.uniprot.org/uniprotkb/P51580">https://www.uniprot.org/uniprotkb/P51580</a> )
Protein Source	Produced at Reaction Biology (aa 2-245)
Screening Location	Malvern, PA, USA
Further Information	More information can be found on our website <a href="#">SPR Assay Services for Drug Discovery</a> .
SAM binding to TPMT	



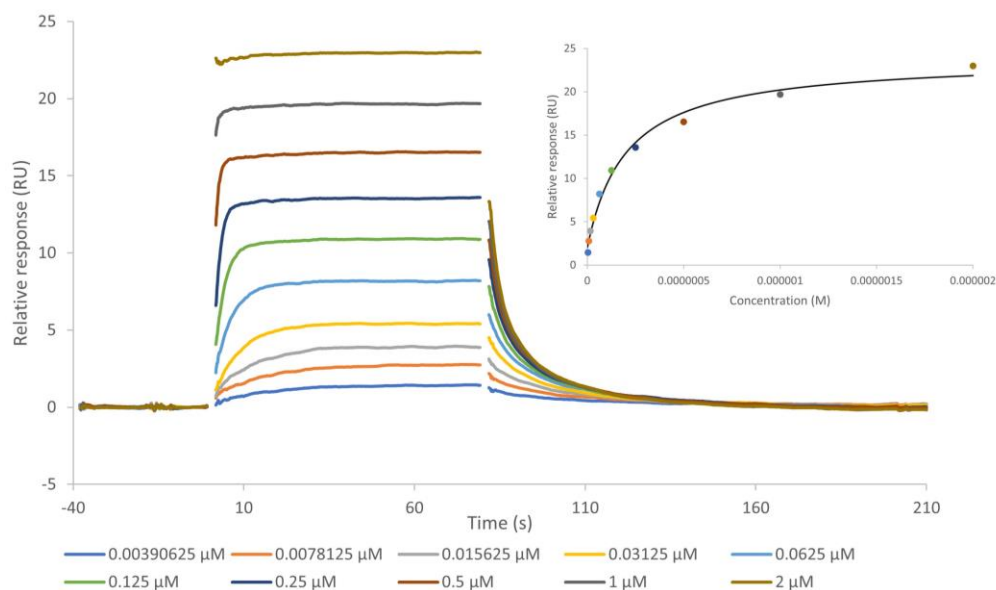
Binding Model	Target	Analyte	Chi <sup>2</sup> (RU <sup>2</sup> )	K <sub>D</sub> (M)	R <sub>max</sub> (RU)	Offset (RU)
Steady state affinity	TPMT	SAH	7.92e-1	2.00e-7	21.8	2.1

The data were collected on a Biacore 8K using multi-cycle kinetics. The data were analyzed using a steady state affinity model.

Let's Discover Together.

© Jan 2024. Reaction Biology. All rights reserved.

## SAH binding to TPMT



Binding Model	Target	Analyte	Chi <sup>2</sup> (RU <sup>2</sup> )	K <sub>D</sub> (M)	R <sub>max</sub> (RU)	Offset (RU)
Steady state affinity	TPMT	SAM	3.75e-1	2.14e-6	22.5	0.8

The data were collected on a Biacore 8K using multi-cycle kinetics. The data were analyzed using a steady state affinity model.